

ARCHI-

DOODLE

*Dedicated to Henry, who was a wonderful man,
a brilliant dad and a great carpenter.*



LAURENCE KING

Published in 2013
by Laurence King Publishing Ltd
361–373 City Road
London EC1V 1LR
Tel +44 20 7841 6900
Fax +44 20 7841 6910
E enquiries@laurenceking.com
www.laurenceking.com

Copyright © 2013 Steve Bowkett

Steve Bowkett has asserted his right under the Copyright, Designs and Patent Act 1988 to be identified as the Author of this work.

All rights reserved. No part of this publication may be reproduced or transmitted in any form or by any means, electronic or mechanical, including photocopy, recording or any information storage and retrieval system, without prior permission in writing from the publisher.

A catalogue record for this book is available from the British Library

ISBN 978 178067 321 9

Designed by Matt Cox for Newman and Eastwood
Cover design by Pentagram
Project editor: Gaynor Sermon
Printed in China

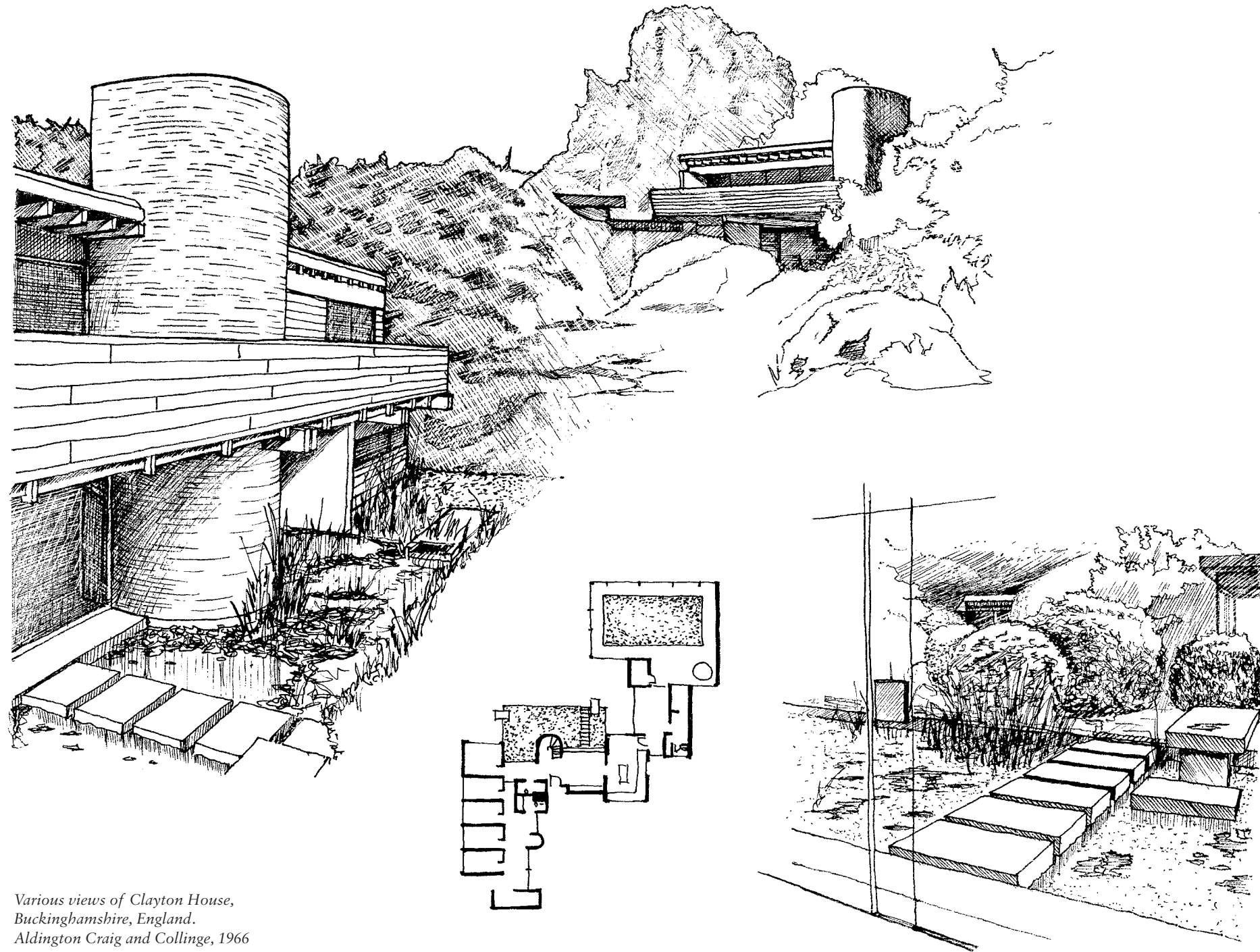
ARCHI-

DOODLE

THE ARCHITECT'S ACTIVITY BOOK

STEVE BOWKETT

LAURENCE KING PUBLISHING



Various views of Clayton House,
Buckinghamshire, England.
Aldington Craig and Collinge, 1966

Introduction

This book is for anyone who is interested in architecture, particularly those of you who like to draw, doodle and dream about our built environment. It is organized around a series of design drawing exercises that range from the amusing to the academic, from the informative to the inspirational. The buildings and landscapes that I have selected to draw should act as a stimulant for creative new architectural designs while also illustrating some of the concepts that underpin 'modern' architecture.

While my drawings in this book are all monochrome, somewhat clean and executed using a fine-line pen (for the sake of clarity), you are encouraged to experiment with a variety of representational media in your renderings; pens, pencils, paint, charcoal, collage, and so on. It is also my intention that you use the illustrations in the book to experiment with colour, doodle around the edges and on top of the drawings, and of course draw in the bigger spaces provided.

This is not a book about *how* to draw buildings – there are plenty of those to choose from – but a book about *what* to draw, and it should be treated as a journal, sketchbook or even as a primer for putting your portfolio together. Having said that, I have given the first few pages over to some tips on basic tools and techniques to get you started.

I hope that this book will be useful and inspirational for architects, students, teachers, parents and their children, but – most importantly – that it will be fun to work with.

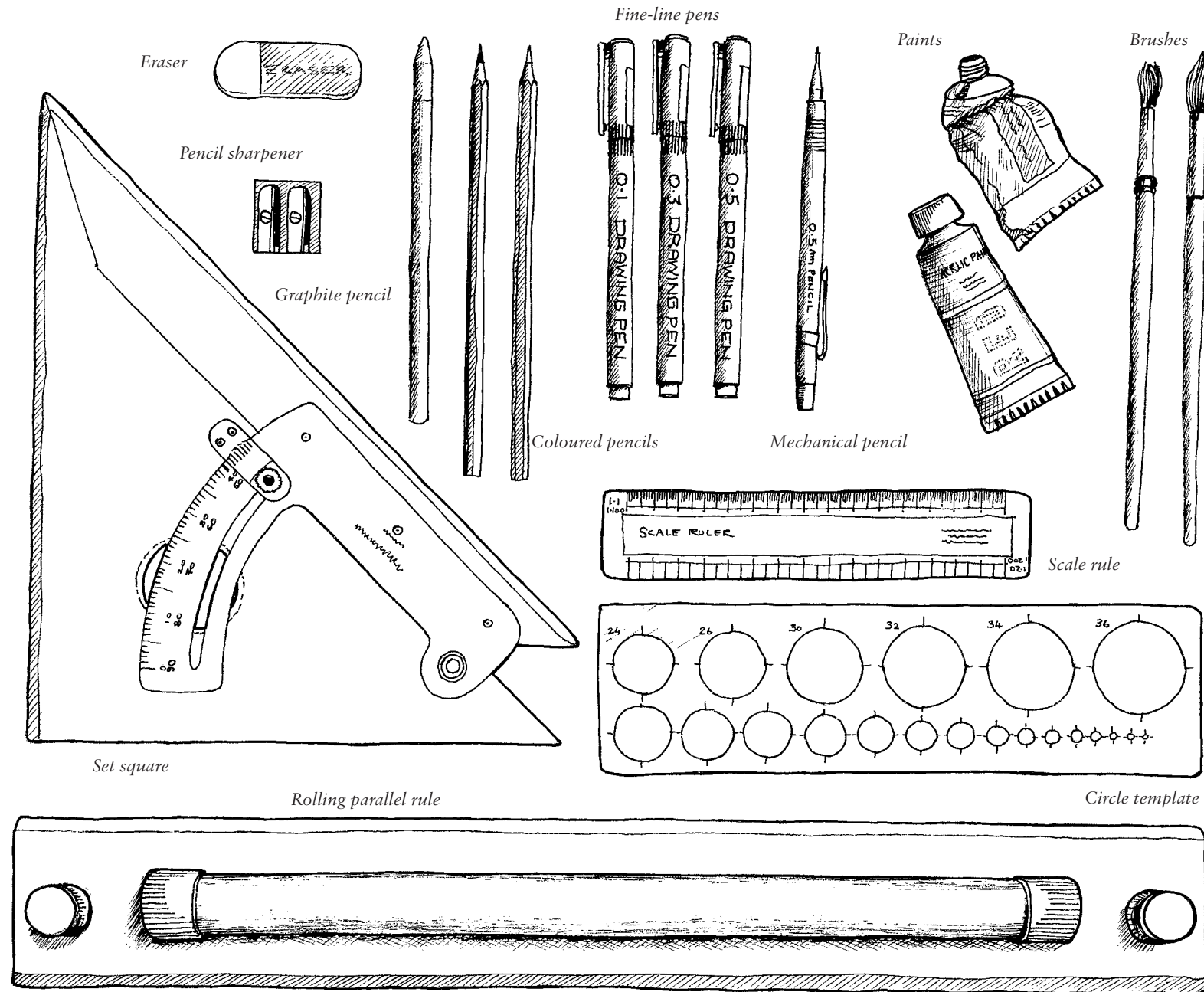
About the author

Steve Bowkett is passionate about good design. He has taught and practised architecture for over 25 years in numerous universities and colleges and is currently a senior lecturer at London South Bank University in the UK. He studied architecture at the Royal College of Art in London and the Polytechnic of Central London.

Steve and his partner Jane have three daughters, Zoe, Sadie and Phoebe, and live in Buckinghamshire, where Steve pursues a serendipitous life.

Equipment

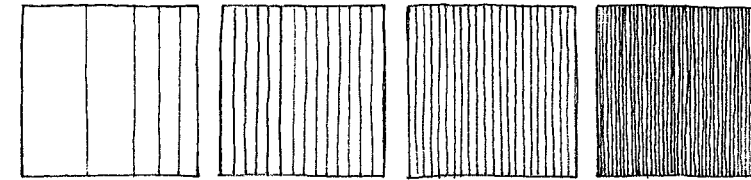
These are the basic tools that you might consider using in this book.



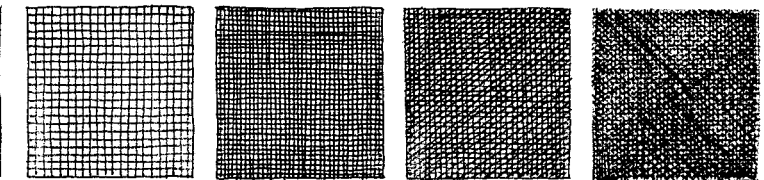
Techniques

This page shows a selection of the techniques that I have used to create the drawings in this book. These simple skills will provide you with the means to build texture and form, add shadow and increase density, and create a range of different material effects.

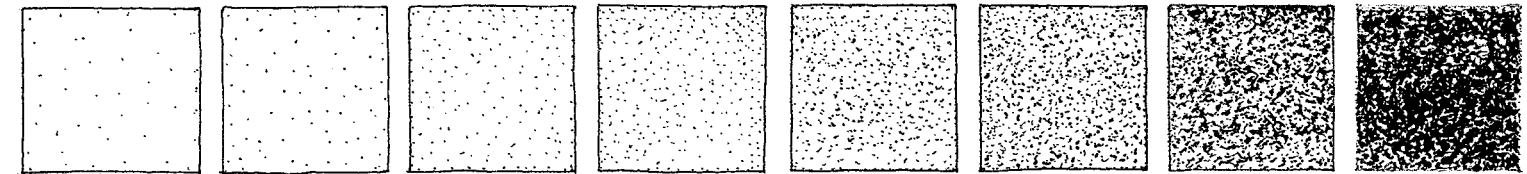
Hatching



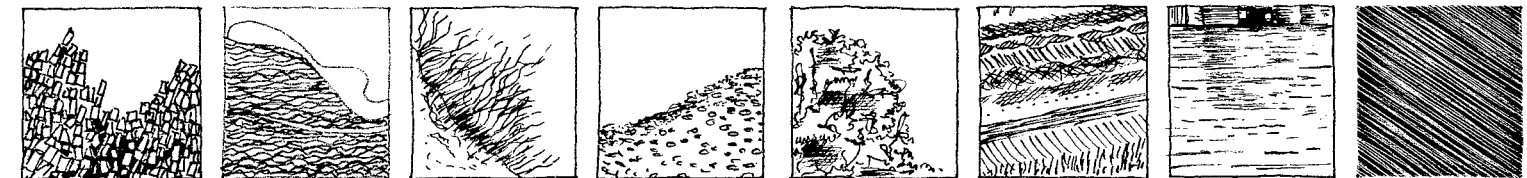
Cross hatching



Stippling techniques



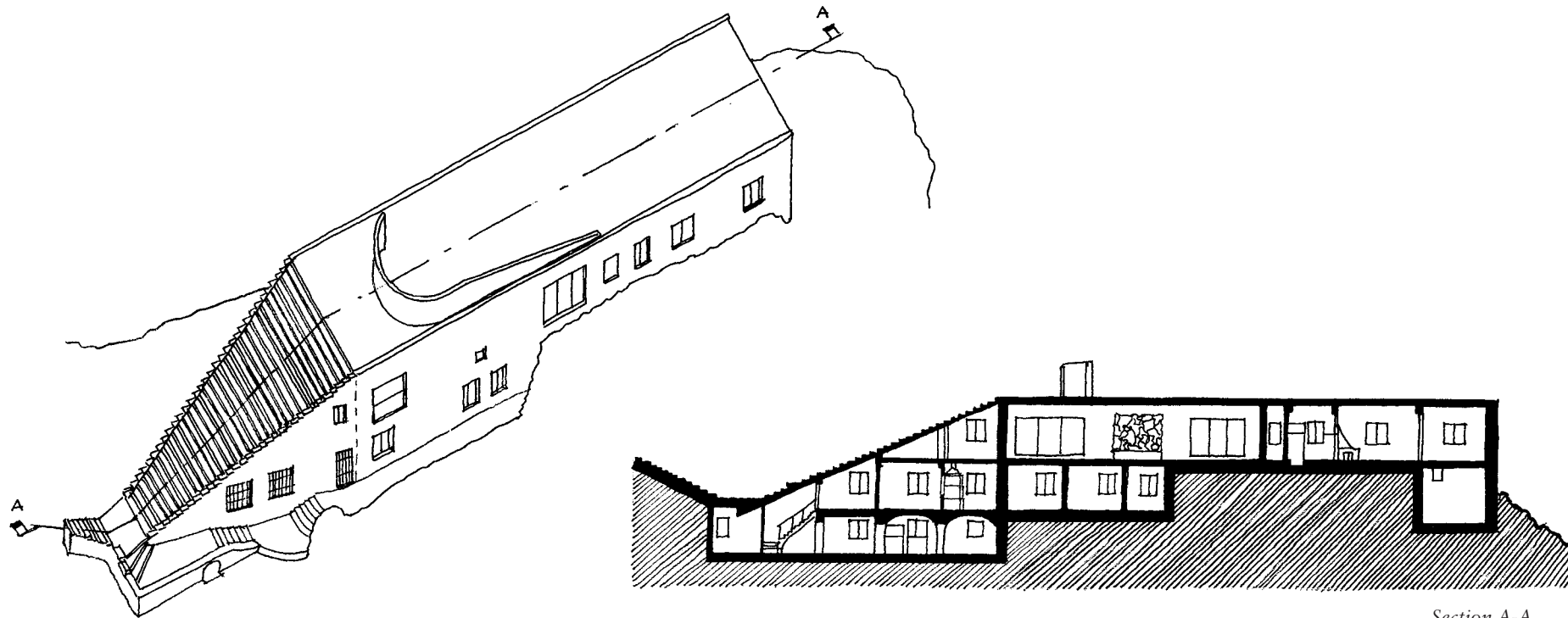
Selection of material effects: coral; sediment; grasses; gravel; foliage; vegetation; rippled water; surface texture



Plans, Sections, Elevations, Axonometric

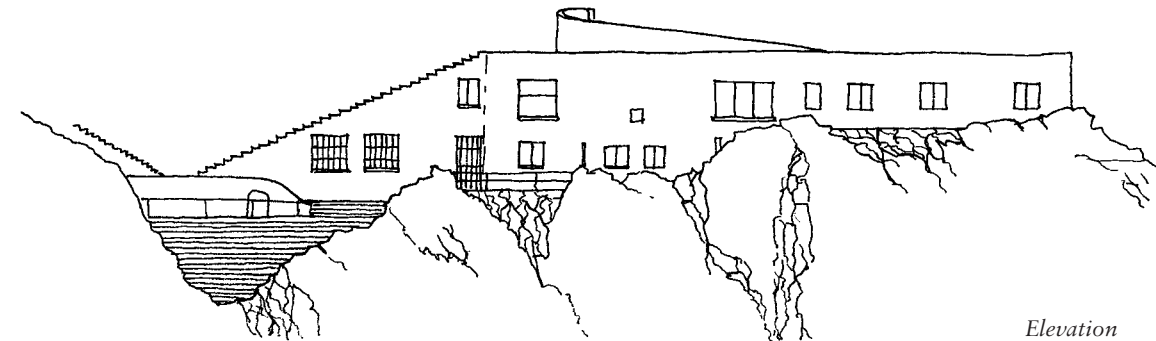
These two pages show the convention of how an architectural orthographic drawing is made of a building. The drawing on the far left is an axonometric drawing with a line showing where the cut is to be made to reveal the sectional drawing below it. The drawing under the section is the side view or elevation of this building.

On the opposite page the axonometric has been cut to reveal the interior rooms of the upper floor of the building. The two drawings below this are the corresponding roof plan and upper-floor plan.



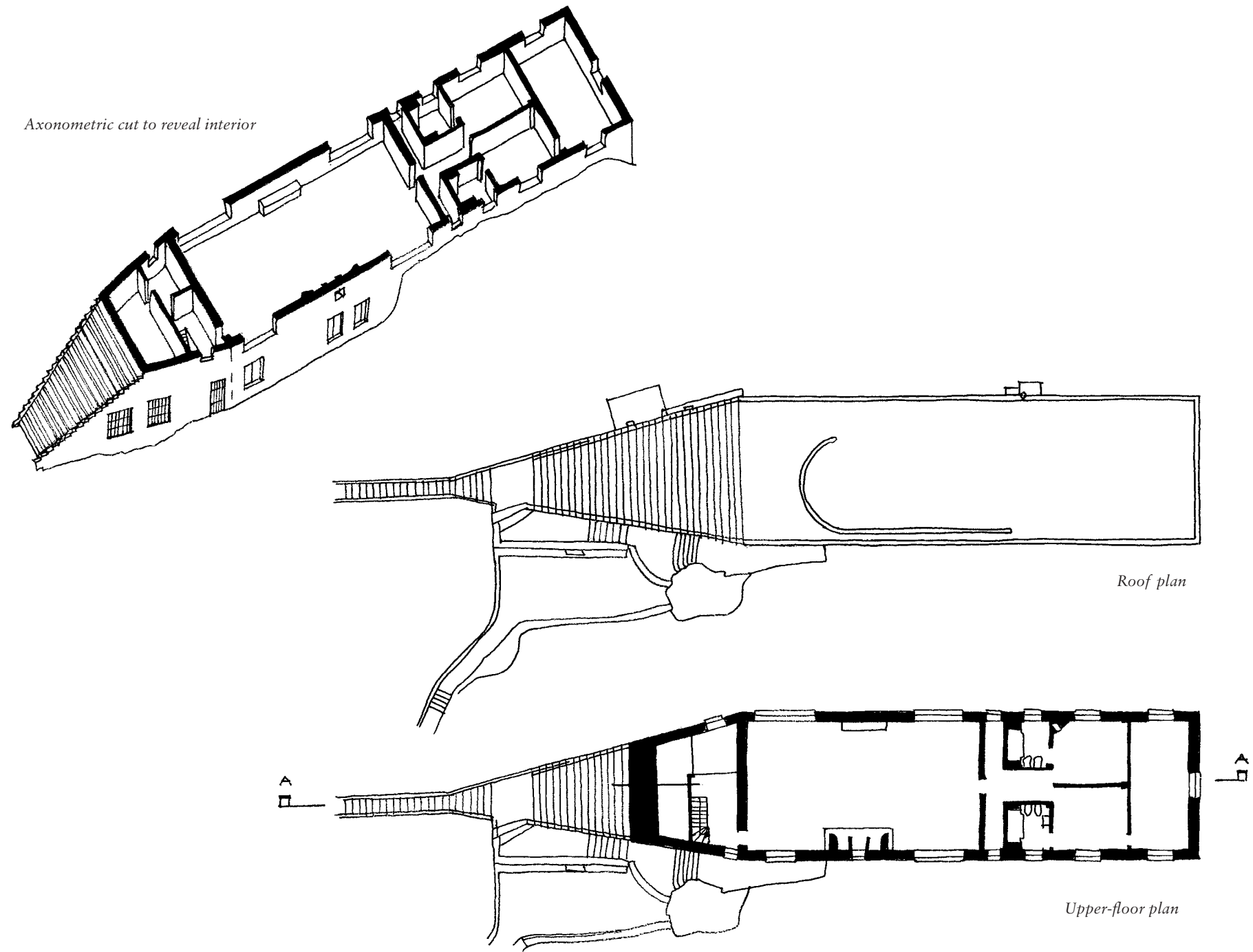
Axonometric view

Section A-A



Elevation

Casa Malaparte, Capri, Italy. Adalberto Libera and Curzio Malaparte, 1940




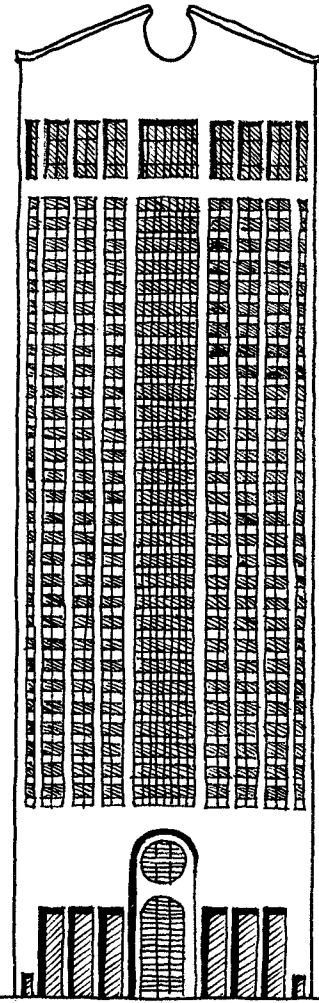
Axonometric cut to reveal interior

Roof plan

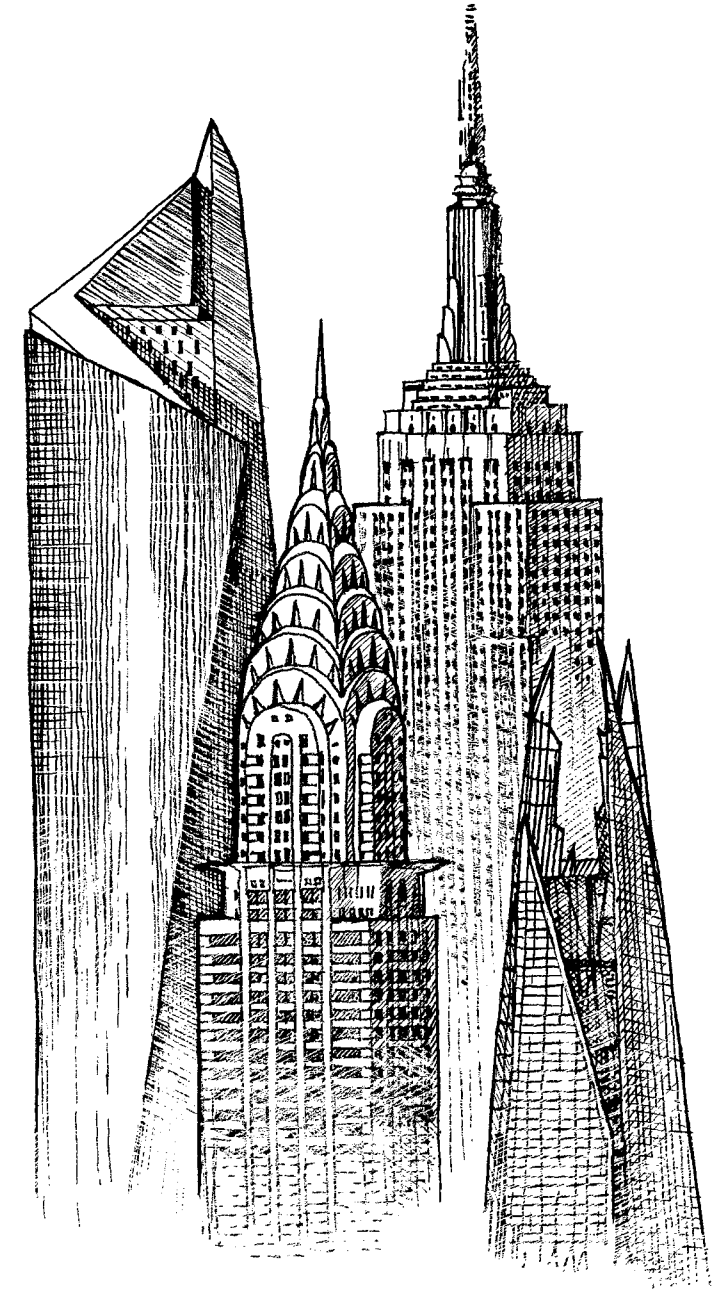
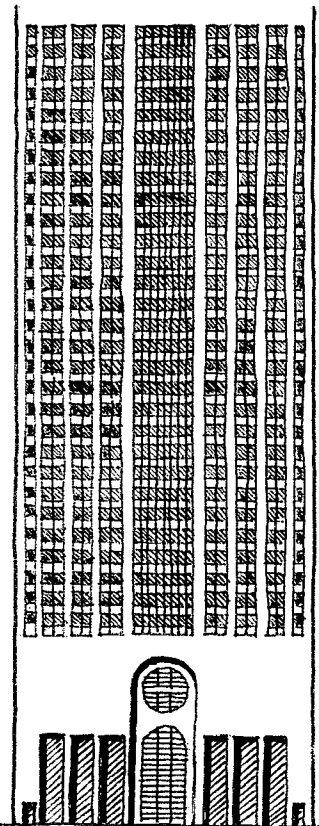
Upper-floor plan

The Sony Tower has a **famous roof**, a 'Chippendale Tallboy' classical pediment top. This iconic skyscraper needs a new image and a new top. Look at other design objects such as furniture to influence the form.

Add to some of these other iconic skyscrapers with memorable rooftops... 



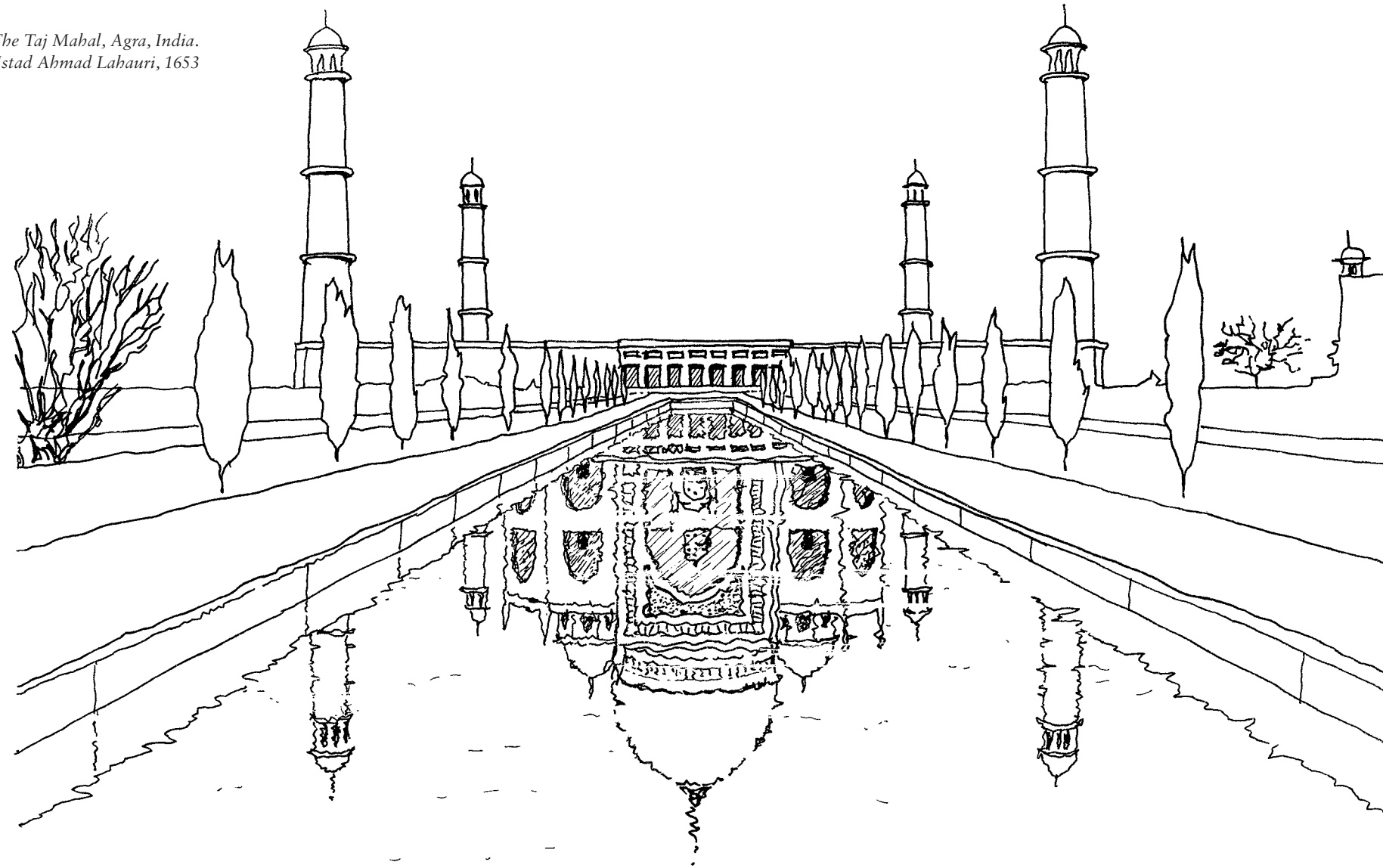
AT&T Building, New York, USA. Philip Johnson and John Burgee, 1984



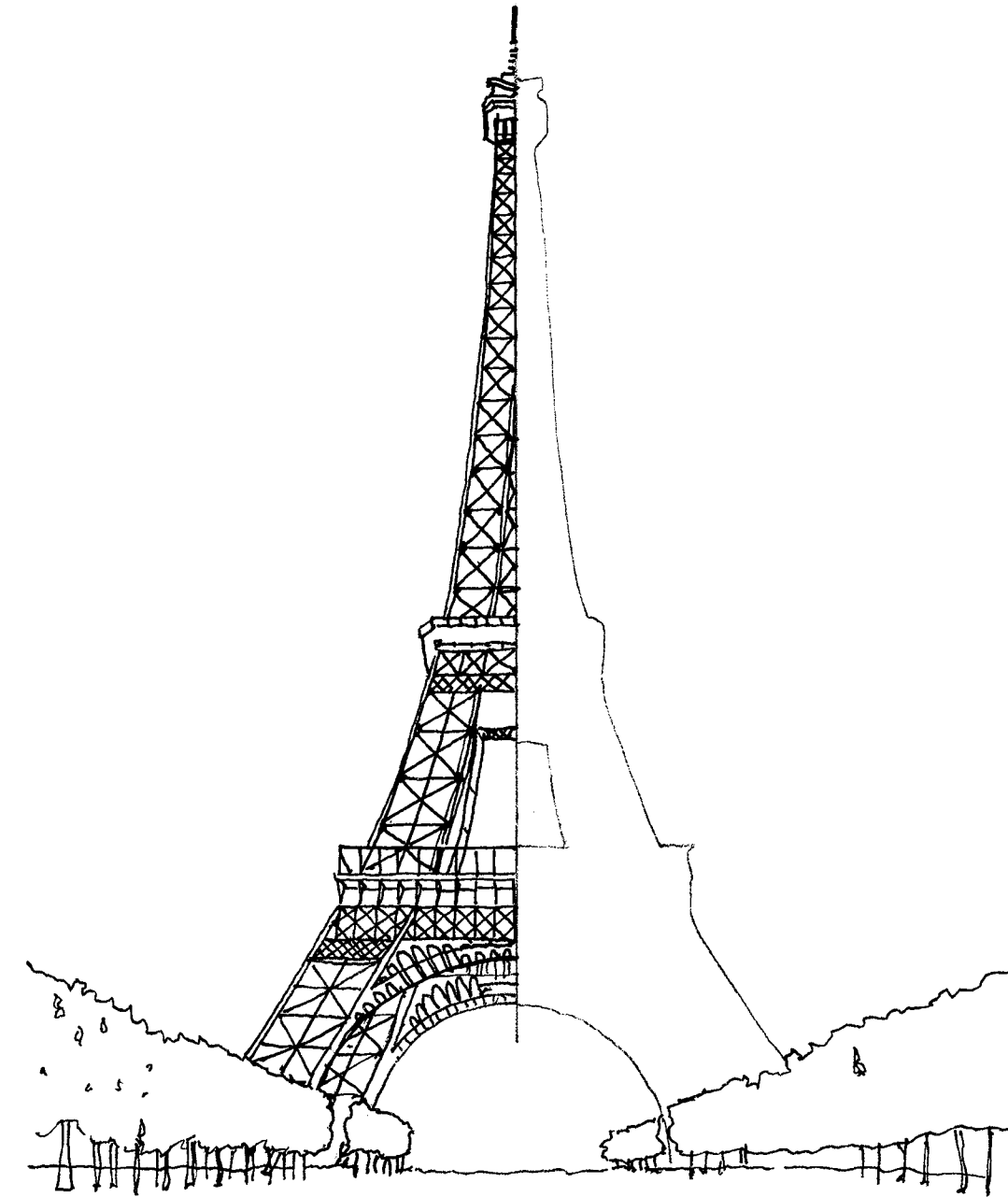
Al Hamra Tower, Kuwait City. S.O.M. 2011; Chrysler Building, NYC. William Van Alen, 1930; Empire State Building, NYC. Shreve, Lamb and Harmon, 1931; The Shard, London. Renzo Piano, 2012.

Complete the drawings of the following **famous buildings.**

*The Taj Mahal, Agra, India.
Ustad Ahmad Lahauri, 1653*



*The Eiffel Tower, Paris, France.
Gustave Eiffel, 1889*



Cities beneath

our great oceans may well provide a new way of living in the future. The structure below was influenced by the shape of coral.

Design your own underwater community in the space provided...

